

TX-7075SW850C55F28-10H952770

PRODUCT SPECIFICATION (R&D version)

Features:

- ◆Excellent transiting heat from LED chip operating under $4.95A^2(S1+S2)/(W1+W2)$.
- ◆Provide uniform cross distribution of positive white and warm white dual color scheme, mixed pure.
- ◆High luminous output.
- ◆No UV.
- ◆Encapsulated materials are environmentally certified and meet environmental requirements.

Chip Material:

- ◆GaInN

Emitting Color:

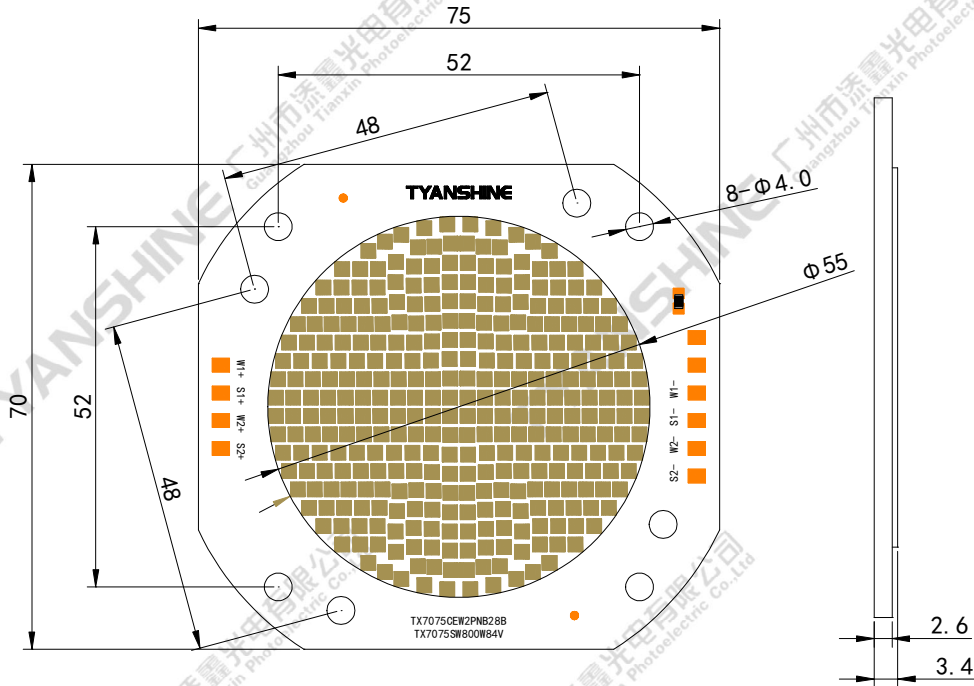
- ◆White
- ◆Warm white

Applications:

- ◆Commercial lighting
- ◆General Lighting

Part No.	TX-7075SW850C55F28-10H952770	Spec No.	WKF-DD0012	Page	1 of 8
----------	------------------------------	----------	------------	------	--------

Package Dimensions:



S1/S2: Warm white (S) ; W1/W2: White (W)

Notes:

- 1.All dimensions are in millimeters .
- 2.Tolerances unless otherwise mentioned are $\pm 0.25\text{mm}$.

Code Formats:

TX-7075SW850C55F28-10H952770

TX	—	7075	SW	850	C	55	F	28	—	10	H95	2770
TYANSHINE	—	series	performance	watt typ	texture	LES	chip code	die count in series	—	BOM	Ra	CCT

Part No.	TX-7075SW850C55F28-10H952770	Spec No.	WKF-DD0012	Page	2 of 8
----------	------------------------------	----------	------------	------	--------

Absolute Maximum Ratings

Parameter	Symbol	Ratings	Unit	
Forward Current	IF(S1+S2)	4.95A*2	A	
	IF(W1+W2)	4.95A*2		
	IF(S1+S2)+(W1+W2)	3.57A*4		
Reverse Voltage	V _R	Not designed for reverse operation	V	
Power Dissipation	P _D	S1+S2	850	W
		W1+W2	850	
		(S1+S2)+(W1+W2)	1200	
Junction Temperature	T _j	W	135	°C
		S	135	
Case Temperature (C)	T _c	105	°C	
Electrostatic Discharge Threshold (ESD)	ESD	2000	V	
Storage Temperature	T _{stg}	-30~+100	°C	
Operation Temperature	T _{opr}	-30~+105		

Notes:

- Specifications are subject to change without notice.
- The data on this specification is for reference only and the actual data is in accordance with the acknowledgment.
- Precautions for ESD:
STATIC SHIELD Electricity and surge damages the LED. It is recommended to use a wrist band or anti-electrostatic glove when handling the LED. All devices, equipment and machinery must be properly grounded.

Part No.	TX-7075SW850C55F28-10H952770	Spec No.	WKF-DD0012	Page	3 of 8
----------	------------------------------	----------	------------	------	--------

Electrical Optical Characteristics (Tc=25°C)

Parameter	Symbol	Condition	Emitting color	Min.	Typ.	Max.	Units	
Luminous Flux	ϕ_v	If=1.5A*2	S1+S2	20000	22500	—	lm	
			W1+W2	24700	27500	—		
Forward Voltage	V_f		S1+S2	75	78	81	V	
			W1+W2	75	78	81		
Correlated Colour Temperature	CCT		S1+S2	2500	—	2700	K	
			W1+W2	6000	—	7000		
Luminous Flux	ϕ_v		If=4.95A*2	S1+S2	56000	65000	—	lm
				W1+W2	70000	80000	—	
Forward Voltage	V_f	S1+S2		81	84	87	V	
		W1+W2		81	84	87		
Correlated Colour Temperature	CCT	S1+S2		2550	—	2750	K	
		W1+W2		6500	—	7500		
Viewing Angle at 50% IV	$2\theta_{1/2}$	S1+S2		—	115	—	Deg	
		W1+W2		—	115	—		
Thermal Resistance Junction to Case	$R_{\theta J-C}$	S1+S2		—	0.047	—	K/W	
		W1+W2		—	0.047	—		
Color Rendering Index	Ra	S/W		95	—	—	—	
TLCI	—	S/W		95	—	—	—	
TM-30	RF	S/W		90	—	—	—	
	RG	S/W		98	—	103	—	

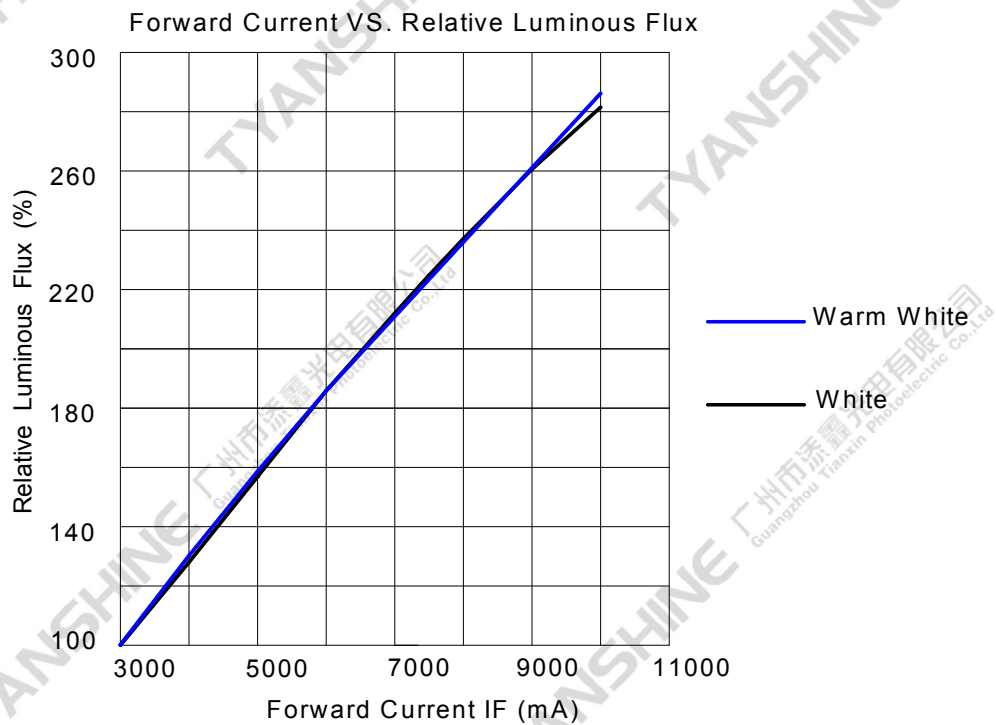
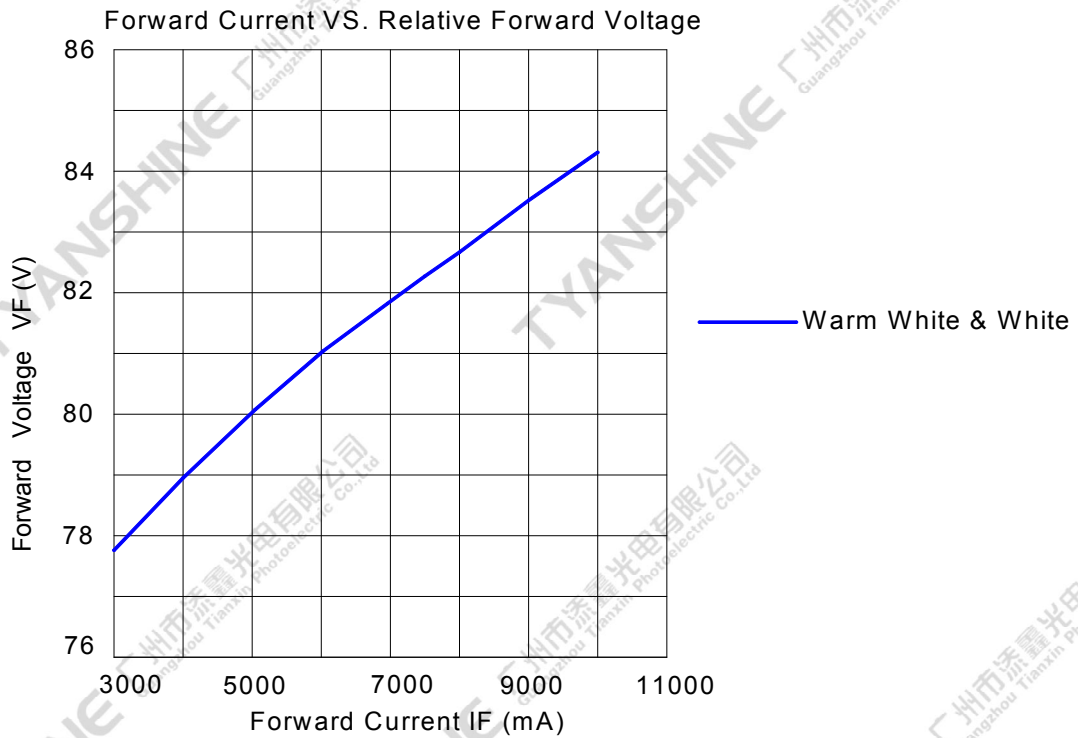
Notes:

- Luminous intensity is measured with a light sensor and filter combination that approximates the CIE eye-response curve.
- $\theta_{1/2}$ is the off-axis angle at which the luminous intensity is half the axial luminous intensity.
- Luminous flux measurement tolerance: $\pm 10\%$.
- Forward voltage measurement tolerance: $\pm 3\%$.
- Ra measurement tolerance: ± 2 .
- chromaticity (x, y) measurements tolerance: ± 0.005 .

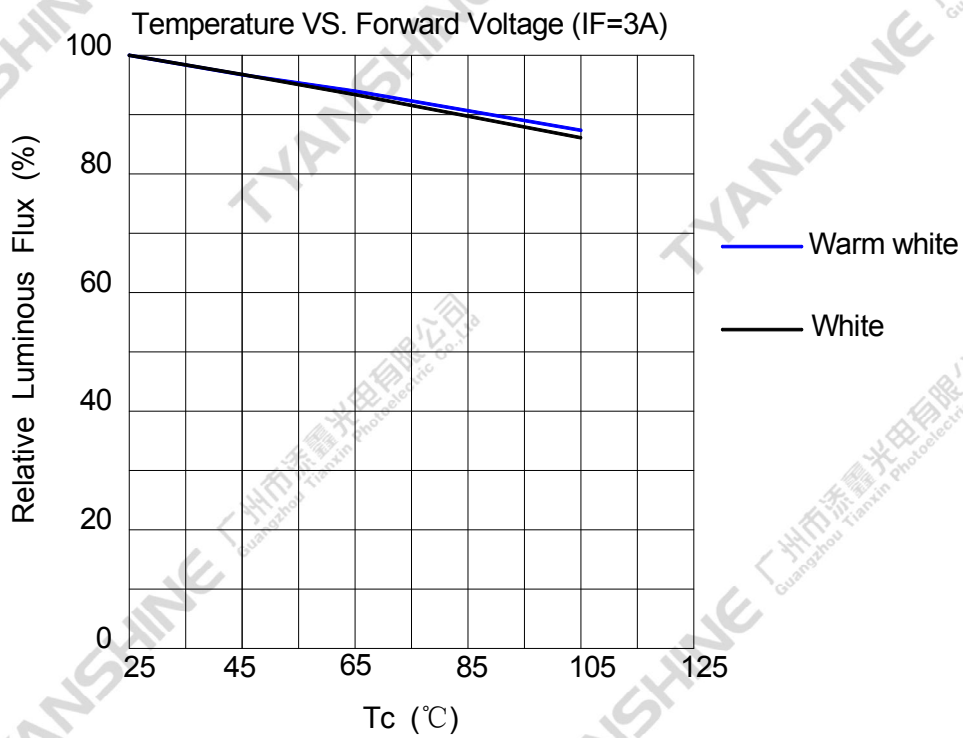
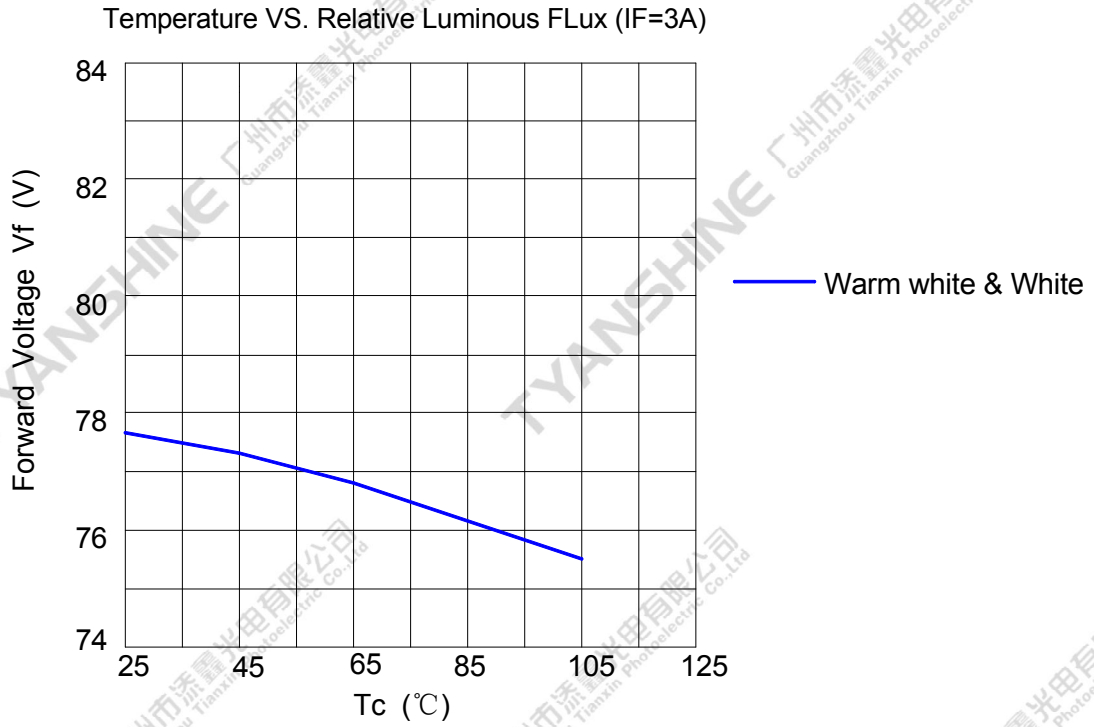
Part No.	TX-7075SW850C55F28-10H952770	Spec No.	WKF-DD0012	Page	4 of 8
----------	------------------------------	----------	------------	------	--------

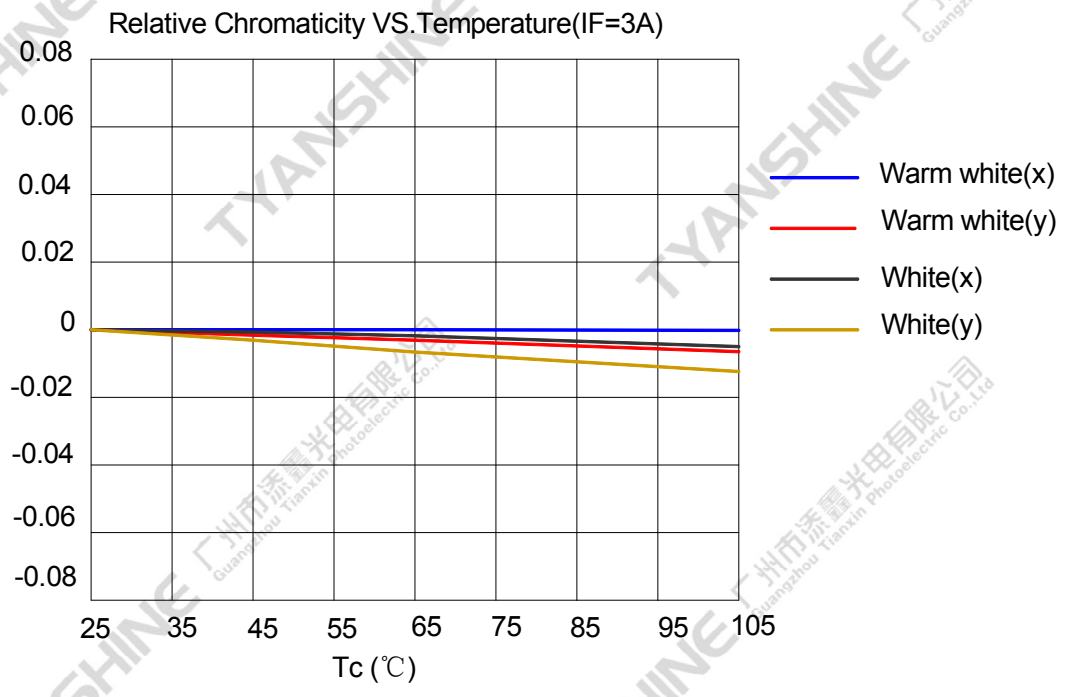
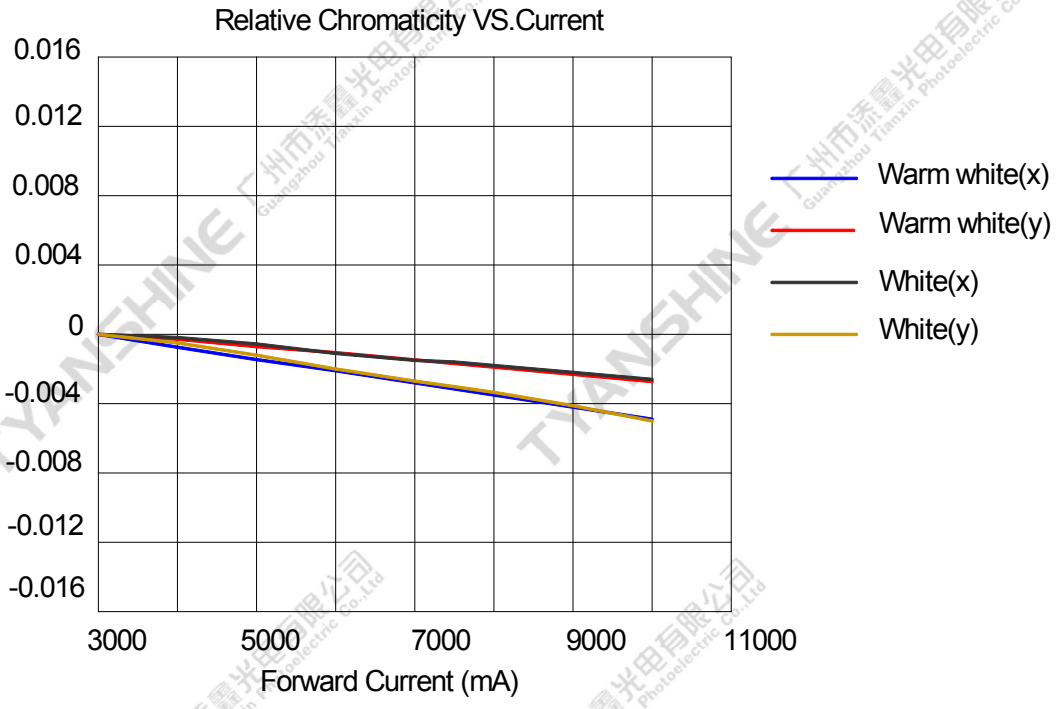
Typical Electrical/Optical Characteristics Curves

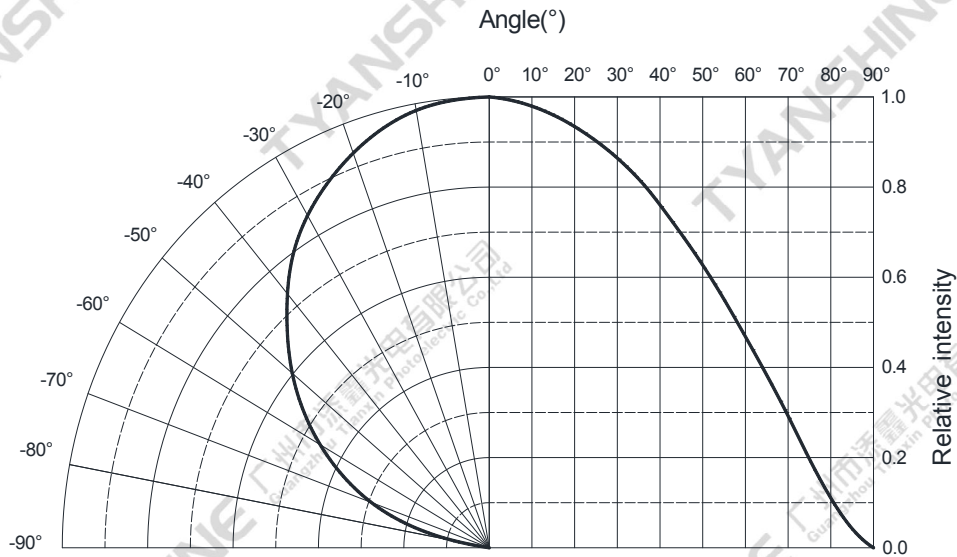
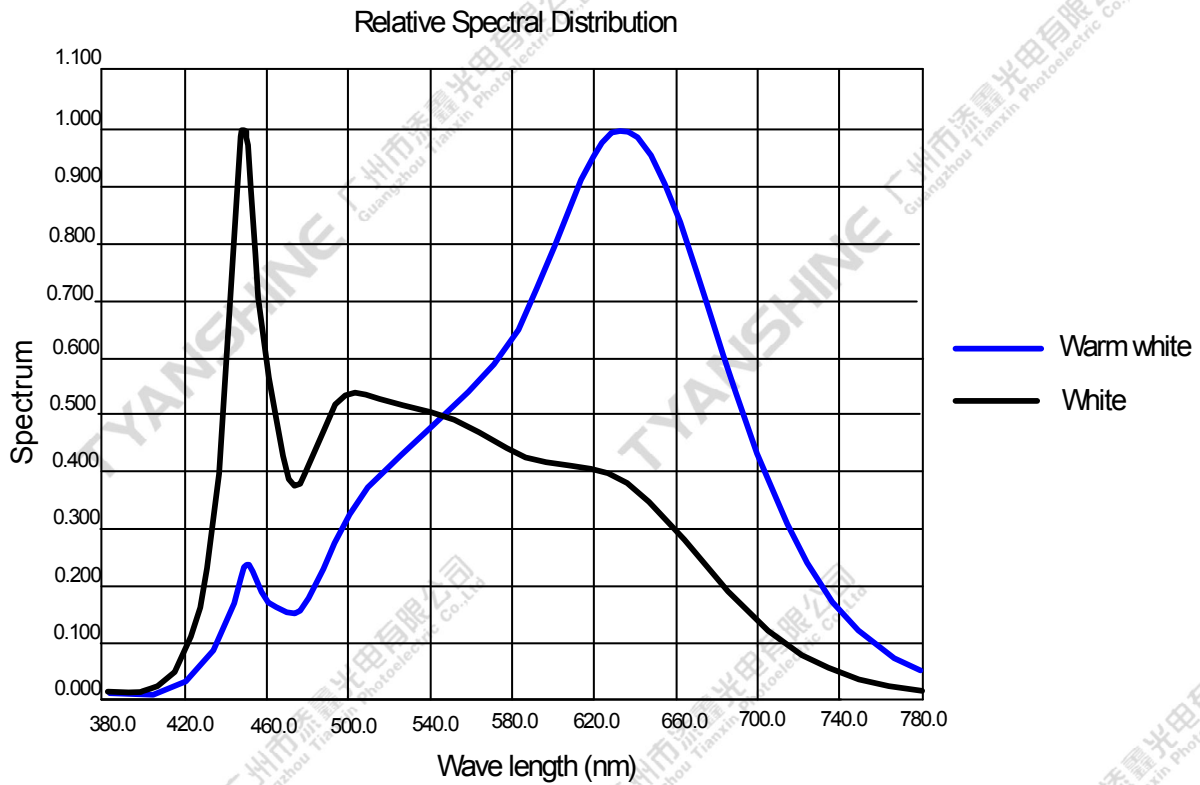
(25°C Ambient Temperature Unless Otherwise Noted)



Part No.	TX-7075SW850C55F28-10H952770	Spec No.	WKF-DD0012	Page	5 of 8
----------	------------------------------	----------	------------	------	--------







Notes:

1. $\theta_{1/2}$ is the off axis angle from lamp centerline where the luminous intensity is 1/2 of the peak value.
2. View angle tolerance is $\pm 5^\circ$.

Part No.	TX-7075SW850C55F28-10H952770	Spec No.	WKF-DD0012	Page	8 of 8
----------	------------------------------	----------	------------	------	--------